

WFP Bangladesh February Newsletter

WFP Bangladesh Country Brief January 2025



In Numbers



927.5 mt food distributed



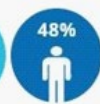
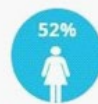
US\$15.3 million distributed in cash-based transfer



US\$59.13 million net funding requirements under the country strategic plan (February – July 2025)



1.2 million people assisted*



[Read more](#)

Programme Updates



The Bangladesh Bureau of Statistics, with support from WFP and the World Bank, launched the Poverty Map of Bangladesh 2022. This vital tool identifies poverty hotspots, helping to target resources where they are needed most. By partnering on this initiative, WFP aims to support data-driven solutions that effectively combat poverty and improve lives across Bangladesh.

[Read more](#)



WFP and the Ministry of Disaster Management and Relief (MoDMR) jointly held an impact evaluation workshop on the Integrated Risk Management (IRM) programme, which had been supported by Korea International Cooperation Agency (KOICA) Bangladesh office. Implemented from 2018 to 2024, IRM empowered communities with forecast-based financing, climate risk insurance, and seasonal livelihood programme opportunities to build their climate resilience.

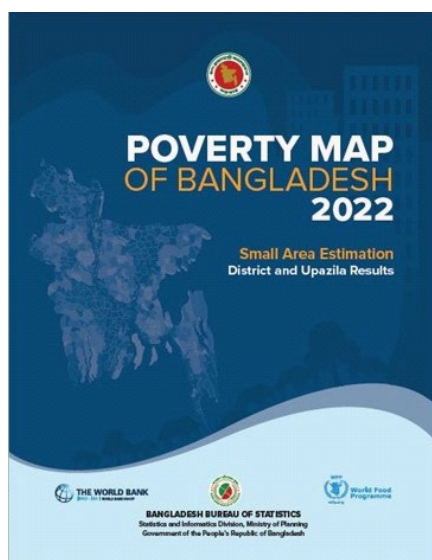
[Read more](#)



WFP and the Ministry of Disaster Management and Relief shared key results and lessons learned from Anticipatory Action and Integrated Risk Management initiatives. In 2024, WFP and partners activated 15 Anticipatory Actions, reaching nearly 430,000 people across 20 districts before major hazards like floods, cyclones, and heatwaves. The event brought together key partners, including FAO, UNICEF, Save the Children, CARE, and the START Network, highlighting the power of collaboration in advancing climate adaptation and

[Read more](#)

Publications



Poverty Map of Bangladesh 2022: Small Area Estimation - District and Upazila Results

The Poverty Map of Bangladesh 2022 highlights significant progress in reducing national poverty, from 48.9% in 2000 to 18.7% in 2022. To address the demand for more localized poverty data, the Bangladesh Bureau of Statistics (BBS), with support from WFP and the World Bank, used Small Area Estimation (SAE) techniques to generate upazila-level poverty estimates. This detailed mapping helps policymakers and organizations target interventions more effectively, ensuring resources are allocated to areas of highest need and supporting the achievement of the Sustainable Development Goals (SDGs) by 2030.

[Download report](#)

Bangladesh Market Monitor (December 2024)

- General inflation eased to 10.9%, driven by lower vegetable prices, but food inflation remains high at 12.9%, impacting households nationwide.
- Foreign exchange reserves rose to USD 26.2 billion, supported by record-high remittance inflows.
- Liquefied Petroleum Gas (LPG) prices remained stable nationwide, with slight decreases in Cox's Bazar.
- Mixed trends observed—prices for edible oils and protein increased, while costs for wheat, lentils, and vegetables declined.
- Wheat imports rose by 20%, and rice imports resumed to stabilize stock levels after adverse weather impacted local crop yields.
- The national cost of a food basket decreased to BDT 2,990 per person, reflecting lower prices for essential items.

[Read more](#)

Bangladesh Market Monitor (January 2025)

- Inflation declined to 9.94% in January 2025, returning to single digits after three months, driven by lower food prices.
- Foreign reserves fell to USD 25.2 billion, impacted by import bills, debt repayments, and lower remittances.
- LPG prices remained unchanged nationwide but increased slightly in Cox's Bazar.
- Prices of eggs, potatoes, onions, and vegetables declined, while rice, soybean oil, and poultry prices rose.
- Wheat imports increased by 17% year-on-year, while rice imports resumed after a long pause.
- The national food basket cost decreased to BDT 2,918 per person per month, driven by reduced vegetable and fruit prices.

[Read more](#)

In the News

[Press release] WFP and Ministry of Disaster Management and Relief call for urgent investment into anticipatory action in Bangladesh | 3 Feb

Partnerships Engagement



WFP thanks Italy for the generous contribution of €3 million to WFP and UNHCR. €2 million will be used by WFP to continue its lifesaving food assistance to the refugees and to support malnutrition prevention and treatment for children and pregnant and breastfeeding women.

[Read more](#)



WFP thanks H.E. Ahmed Hussen, Minister of International Development and his delegation from Canada for visiting our food assistance outlet, where Rohingya families can access nutritious dry and fresh foods using WFP's monthly \$12.50 per person entitlement.

[Read more](#)



WFP thanks Ambassador Dominik Stillhart and his delegation from Switzerland for coming to Cox's Bazar and seeing the critical work of WFP and our partners for the Rohingya refugees.

[Read more](#)



WFP welcomed UK Human Rights Ambassador Eleanor Sanders to our Rohingya refugee operations in Cox's Bazar. They visited our food assistance programme, observed a fresh food market where Rohingya families use WFP e-vouchers. A big thank you to Eleanor Sanders, and UK for their continued support.

[Read more](#)



A WFP team, led by Country Director Dom Scalpelli and Deputy Country Director Simone Parchment, visited Chattogram Hill Tracts (CHT) to see the programmes in action. During their visit, they met Deputy Commissioner (DC) of Rangamati Mr. Mohammed Habib Ullah, Chairman of Rangamati Hill District Council Agriculturist Mr. Kazal Talukder, and Chairman of Bandarban Hill District Council Prof. Mr. Thanjama Lusai to discuss food security, nutrition, and livelihoods, and visited a rice mill where regular rice is fortified with nutrients and met women participating in the Vulnerable Women Benefit Programme supported by WFP.

[Read more](#)



Country Director, Dom Scalpelli, visited Noakhali to see firsthand how WFP's support is helping communities recover from last year's devastating floods. The August floods were particularly severe, affecting nearly 6 million people across 11 districts in eastern Bangladesh.

[Read more](#)



Country Director, Dom Scalpelli, visited a WFP resilience project in Cox's Bazar that equips local smallholder farmers with climate-smart agriculture techniques to enhance productivity and income. Since 2019, WFP has supported 45,000 farmers with training, grants, and now climate-smart agriculture, post-harvest management, and value chain development for a resilient future.

[Read more](#)

People of WFP



Meet Tonusree Manji, one of our Programme Policy Officer at WFP. While still a new member of our WFP family, Tonusree is no stranger to development work and is supporting one of Bangladesh's flagship social safety net programmes - the Mother and Child Benefit Programme.

[Watch video](#)



Meet Bithika Biswas, Head of Rangpur Field Office at WFP. A veteran aid worker, Bithika has been with WFP through it all - from the early days of the Rohingya refugee response to leading climate resilience efforts for Bangladeshi communities on the frontlines of climate change.

[Watch video](#)

Find us on

